



# How to take care of your dog while at work?

Having a dog at home when you are out is like leaving your heart back at home. And, for working pet parents, it can be a **nightmare**.

Here are a few things that you can use to make sure that you are connected with your pet always.

## Controlling curiosity

Leaving a dog out in open spaces can increase their curiosity. Restrict your dog's access to the spaces around when they are at home.

*You can try using a crate or child safety room divider.*



## Potty training

If you don't potty train your dog, you are going to come home to find pee pee and poo poo all over the house, try to come in between and take them out for walks.

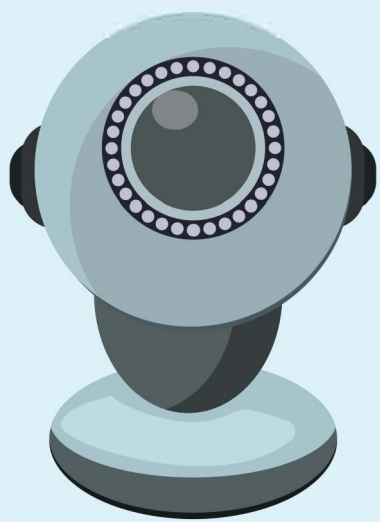
*If that's too much to ask, then potty train them using a cloth or a paper.*



## Use a food dispenser

What if your dog gets hungry in the middle of the day? And, runs out of food.

*Buy a food dispenser such that you can keep them fed.*



## Pet camera

Install a camera in your house, so that you can *see what your dog is up to all through the day.*

## Pet temperature monitor

A pet monitor can give you Peace of Mind that your little one is safe at home. It updates the room temperature for every 30 minutes and *alerts you when the temperature rises or falls beyond the threshold.*

