

# 6 WAYS TO PUPPY-PROOF YOUR HOUSE



To ensure better safety for your furry little friend at home, it's important to familiarize yourself with these helpful 'what-to-do tips'.

## 1. Survey the space



Identify the potential hazards at your house. Observe from your pet's perspective.

- Look for loose wires or cords,
- Toxic plants,
- Tiny swallowable objects

## 2. Secure your space

- Ensure nothing around your pup's space is dangerous.
- Install baby gates to block off areas where your pup is prohibited.



## 3. Create a safe place

- Make a separate place for your pooch.
- Make sure it is cozy with a soft bed, & toys to entertain.

## 4. Keep cleaning supplies out of reach

- Store the cleaning supplies in a secure location out of reach.
- Any chemical spills or messes, clean them promptly before your pup accidentally licks or ingests them.



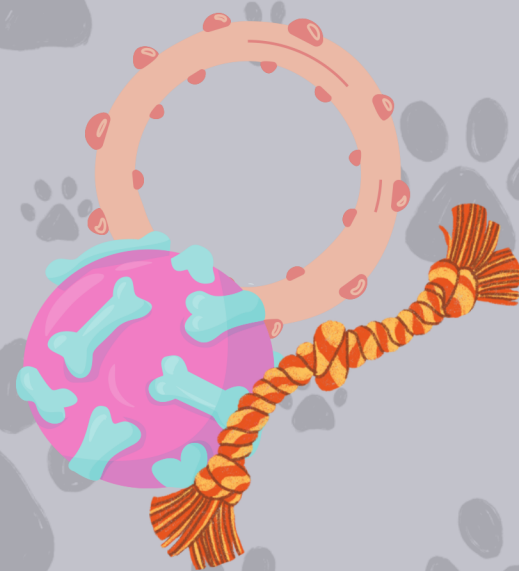
## 5. Keep food items away



- Keep foods on counters or in open containers away.
- Tightly seal the trash cans.
- Always keep the pantry doors locked.

## 6. Joy Toy

- Keep foods on counters or in open containers away.
- Tightly seal the trash cans.
- Always keep the pantry doors locked.



Remember to keep an eye on your puppy at all times and make adjustments as needed. You can enjoy a happy and healthy life with your new furry companion with a little effort and planning.